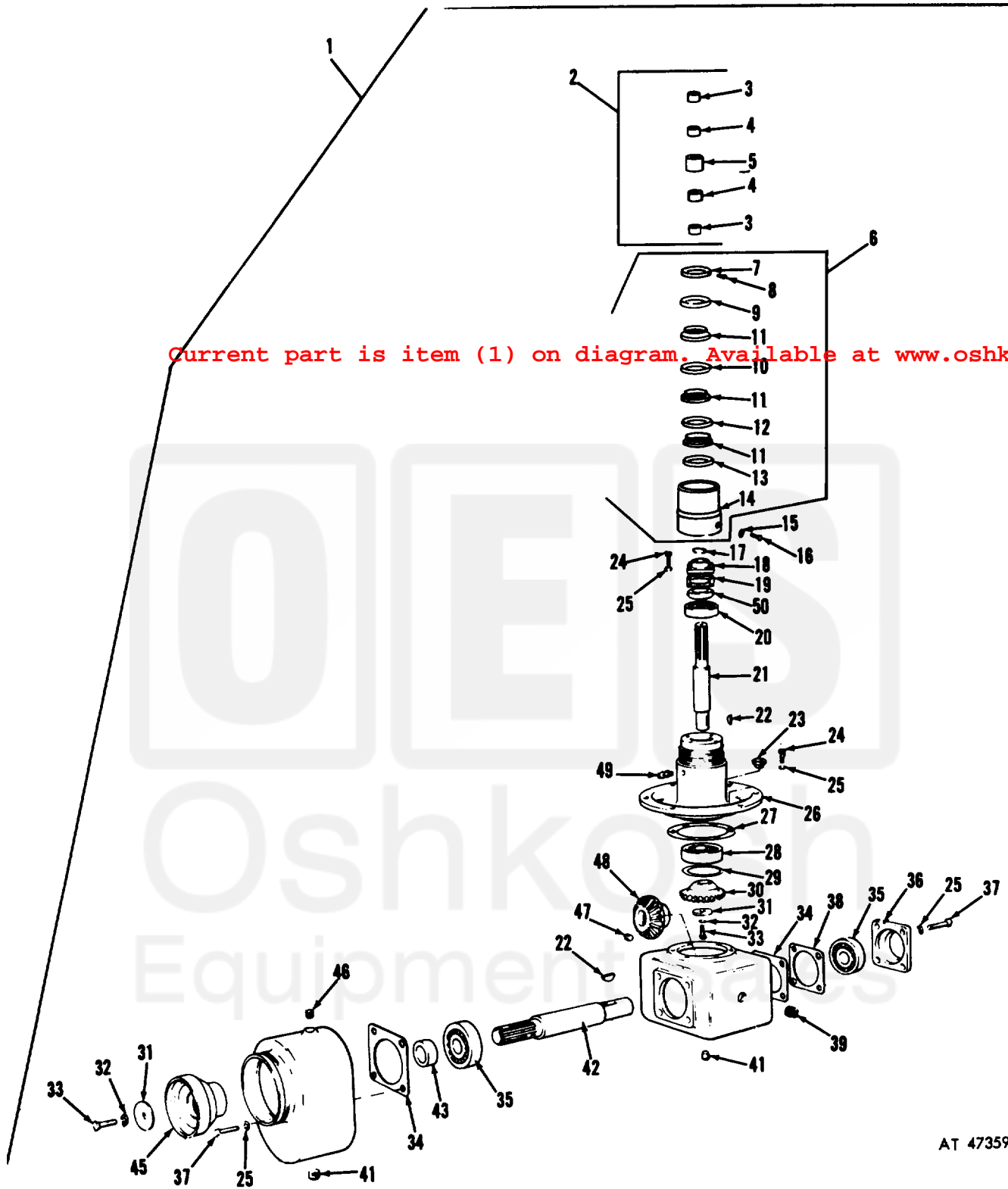


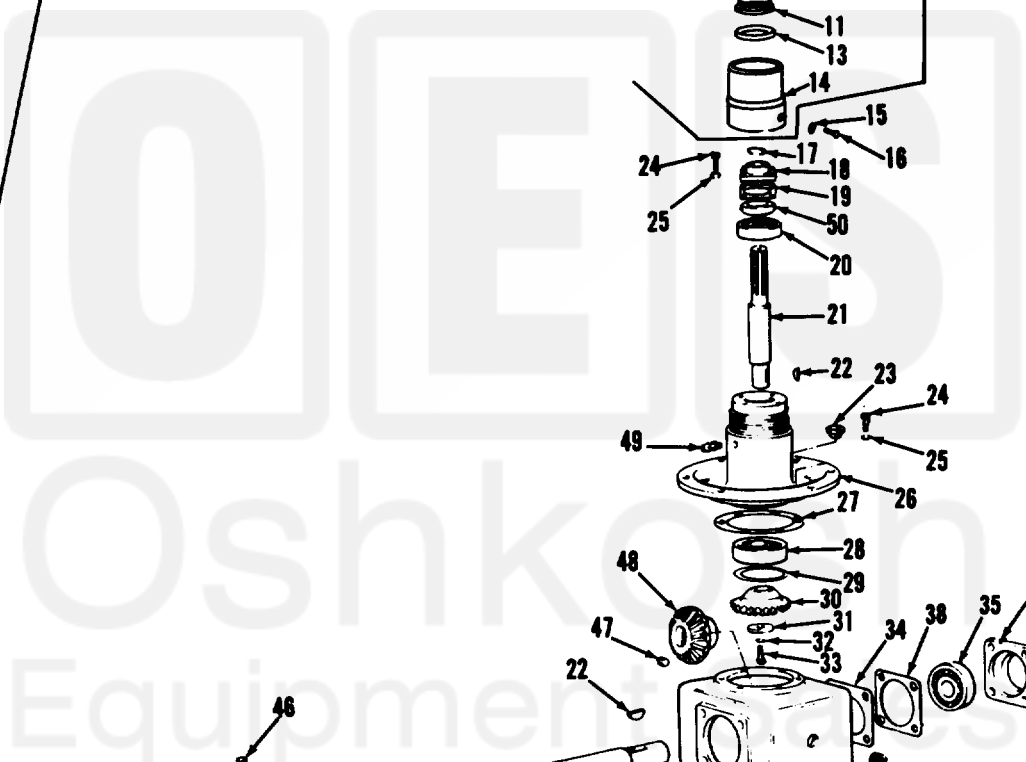
Current part is item (1) on diagram. Available at [www.oshkoshequipment.com](http://www.oshkoshequipment.com)

TM9-2320-211-34P

(1) SMR Code	(2) Federal Stock Number	(3) DESCRIPTION	(4) UNIT of meas	(5) Qty inc. in Unit	(6) 30-day DS maint allowance	(7) 30-day GS maint allowance	(8) 1-yr alw	(9) Depot maint alw per 100 equip cnt- gcy	(10) Illustration No. (a) Figure No.	(b) Item No.
Reference Number & Mfr. Code		Usable On Code	(a) 1-20 (b) 21-50 (c) 51-100			(a) 1-20 (b) 21-50 (c) 51-100				
2001-HOIST, WINCH, CRANE ASSEMBLY-CONTINUED										
X1		CAM: CONTROL BOX ASSEMBLY 7409096 (19207)		1					266	7
P-O	2520-740-9093	CAM, CONTROL BOX: 7409093 (19207)	EA	1	*	*	*	*	6	10 266 8
X1		ROLLER: CONTROL BOX LEVER 7409248 (19207)		2					266	9
P-O	2590-740-9100	GASKET: CONTROL BOX COVER 7409100 (19207)	EA	1	*	*	*	*	10	20 266 10
P-O	2520-740-9101	COVER, CONTROL BOX. 7409101 (19207)	EA	1	*	*	*	*	6	10 266 11
P-O	5305-042-0993	SCREW, ASSEMBLED WASHER: CONTROL BOX COVER 420993 (21450)	EA	4	*	*	*	*	6	10 266 12
X1		FITTING: CONTROL BOX COVER 172-0034 (19207)		1					266	13
P-O	2520-740-9094	LEVER, REMOTE CONTROL: CONTROL BOX ASSEMBLY 7409094 (19207)	EA	1	*	*	*	*	4	5 266 14
P-O	5310-582-5965	WASHER, LOCK: CONTROL BOX LEVER MS35338-44 (96906)	EA	2	*	*	*	*	6	10 266 15
P-O	5310-768-0319	NUT, PLAIN HEXAGON HEAD: CONTROL BOX LEVER MS51968-2 (96906)	EA	2	*	*	*	*	6	10 266 16
P-O	5310-732-0559	NUT, PLAIN HEXAGON: CONTROL BOX LEVER MS51968-8 (96906)	EA	1	*	*	*	*	6	10 266 17
P-O	5310-637-9541	WASHER, LOCK: CONTROL BOX LEVER MS35338-46 (96906)	EA	1	*	*	*	*	6	10 266 18
P-O	2520-740-9097	LEVER, CONTROL BOX: 7409097 (19207)	EA	2	*	*	*	*	4	5 266 19
X1		LEVER, CONTROL BOX: 7409098 (19207)		1					266	20
P-O	3040-489-6022	SHAFT, SHOULDERED: CONTROL BOX ASSEMBLY 7409095 (19207)	EA	1	*	*	*	*	6	10 266 21
X1		SCREW: CONTROL BOX LEVER 189330 (21450)		1					266	22
P-F	2590-933-9581	GEARCASE ASSEMBLY, BEVEL: 10876196 (19207)	EA	1	*	*	*	*	4	5 267 1



Current part is item (1) on diagram. Available at [www.oshkoshequip.com](http://www.oshkoshequip.com)



AT 47359

Figure 267. Bevel gearcase assembly.

Current part is item (1) on diagram. Available at [www.oshkoshequip.com](http://www.oshkoshequip.com)